

The Chablis Pullover

Designed for
S-t-r-e-t-c-h
Fabric

A soft and feminine addition to our Stretch Top Series of patterns, the Chablis has a deep cowl neckline which drapes beautifully in the front, while extending around the neck to the center back. There is neck stand built into the design, so the neckline will stay up on the neck when worn and will fit smoothly under a jacket collar as well. The fold of the cowl is very deep, extending down into the armholes, so you will NEVER see the raw edge of the cowl when the garment is worn!

A
Stretch
Top
Pattern

What are Stretch Top Patterns?

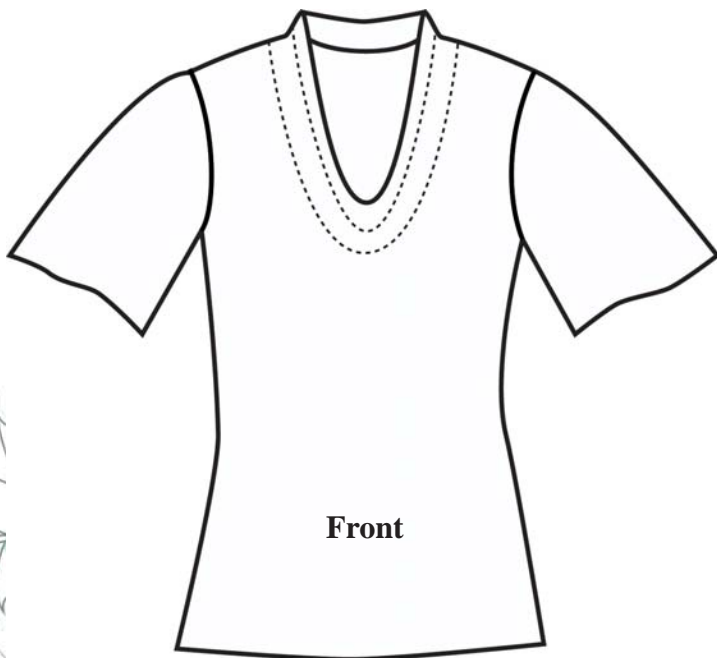
Stretch Top Patterns are designed so you can mix & match. The sleeve from any dress or top with the Stretch Top Symbol on the pattern will interchange with any other pattern with the Stretch Top Symbol.



Difficulty Rating
A-Easy
B-Intermediate
C-Advanced

Yardage Requirements		XS	S	M	L	XL
		(0-2)	(4-6)	(8-10)	(12-14)	(16-18)
Short Sleeves as Shown	52+''	1¾ yds	1¾ yds	2 yds	2 yds	2 yds
Finished Measurements		XS	S	M	L	XL
Bust		32 ⁵ / ₈ ''	34 ⁵ / ₈ ''	36 ⁵ / ₈ ''	39 ⁵ / ₈ ''	43 ⁵ / ₈ ''
Waist		30 ¹ / ₈ ''	32 ¹ / ₈ ''	34 ¹ / ₈ ''	37 ¹ / ₈ ''	41 ¹ / ₈ ''
Hip		36''	38''	40''	43''	47''

Suggested Fabrics - The teal sample on the cover is a medium weight sweater knit and holds the cowl shape well all day after arranging. The black/white sample on the cover is a lightweight jersey knit and is very soft and feminine. Choose a light to medium weight soft knit with a good amount of drape. The pattern is designed for 25% stretch.



This pattern and all instructions is copyrighted 2012 by Brensan Studios and The Brensan Group, LLC.

All rights reserved. Please contact for permission to reprint any portion hereof.

Brensan Studios™ #532 - 8912 E. Pinnacle Peak Rd F-9 - Scottsdale, AZ 85255

Website: www.brensan.com