

# Cowl Neck Tunic

*This beautiful Cowl Neck tunic/blouse is designed so you can have a bit of fun with the Cowl Neck itself. The Cowl portion of the pattern is separate and is cut on the bias for a soft drape, while the body portion of the pattern is cut on the straight-grain for stability. This pattern is close-fitting (like a Basic Shell) so you can shorten and wear under a jacket (with sleeves from our Basic Shell pattern). The Cowl portion is beautiful when cut from a 24" (or larger) scarf. This pattern does have a bust dart and pattern alteration guidelines are included.*

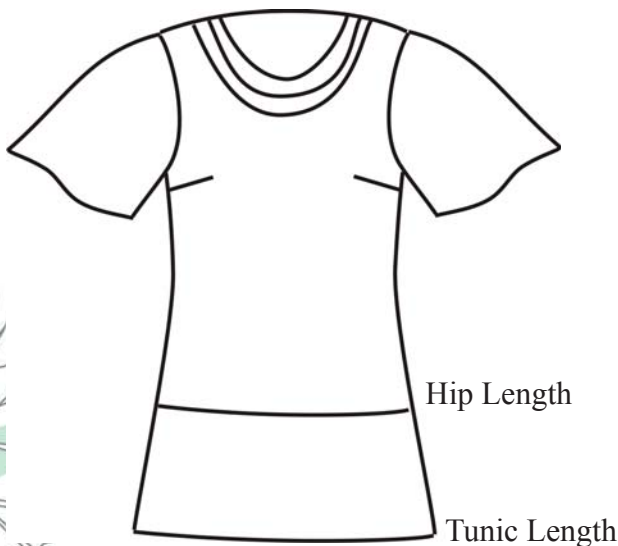
**Dress Club  
Pattern**

## What is a Dress Club Pattern?

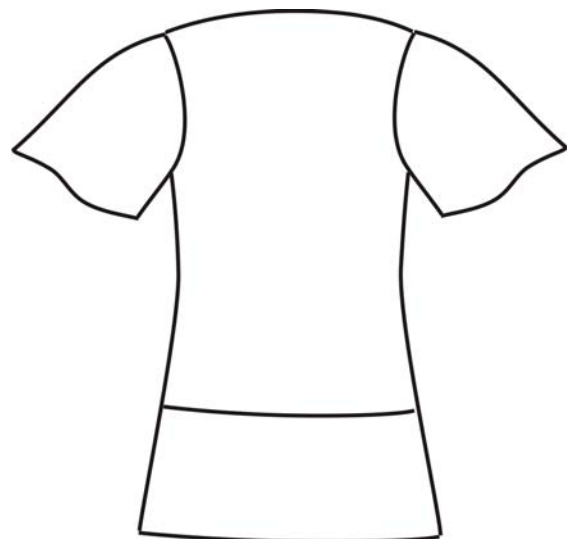
*Dress Club Patterns are designed so you can mix and match. Any body will easily interchange with any of the sleeve in the Dress Club Series of Patterns. Watch for the emblem!*

Yardage Requirements		S	M	L	XL
		(4-6)	(8-10)	(12-14)	(16-18)
<b>All Same Fabric</b>	45"	2yds	3 yds	3yds	3¼yds
	60"	1⅓yds	1⅓yds	1⅓yds	1⅓yds
<b>Separate Cowl (Pictured)</b>					
Main Fabric	45"	1½yds	2½yds	2½yds	2¾yds
	60"	1⅓yds	1⅓yds	1⅓yds	1⅓yds
Cowl Neck	45"	½ yd	½ yd	½ yd	½ yd
<i>Cowl Neck can also be cut from one (1) 24" Neck Scarf</i>					

Finished Measurements	S	M	L	XL
Bust	37¾"	39¾"	43¾"	46¾"
Hip / Lower Edge	41"	43"	46"	50"
Back Length - Hip Length	21"	21½"	22"	22½"
Back Length - Tunic Length	26"	26½"	27"	27½"



Front



Back

*This pattern and all instructions is copyrighted 2008-2010 by Brensan Studios and The Brensan Group, LLC. All rights reserved. Please contact for permission to reprint any portion hereof.*

**Brensan Studios™** #532 - 8912 E. Pinnacle Peak Rd F-9 - Scottsdale, AZ 85255  
Website: [www.brensan.com](http://www.brensan.com)