

**Designed for
S-t-r-e-t-c-h
Fabric**

Grenadine Top

Comfort rules with this easy stretch top. You have a choice of a plain body or a gathered body attached to a lined yoke. The gathered body tapers back to a regular fit at the hipline, so you have the extra fullness in the bust area, but a smooth fit at the hipline. The sleeves are gathered to the bodice as well as to bands for a casual, fun look. Remember that these sleeves interchange with all the other patterns in the Stretch Top Series.



What are Stretch Top Patterns?

Stretch Top Patterns are designed so you can mix & match. The sleeve from any dress or top with the Stretch Top Symbol on the pattern will interchange with any other pattern with the Stretch Top Symbol.

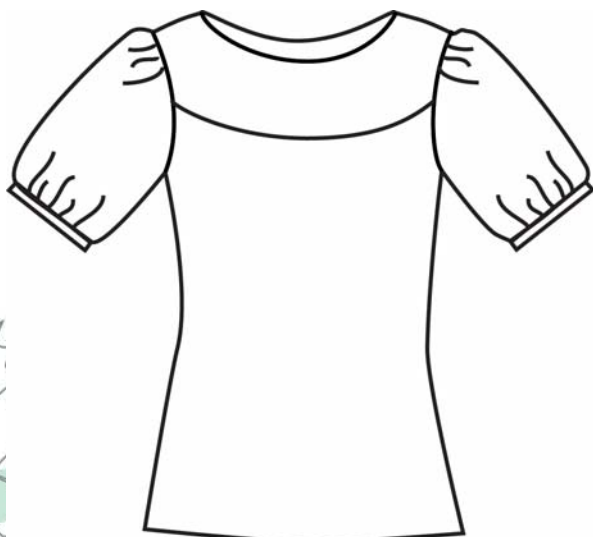
Difficulty Rating
A-Easy
B-Intermediate
C-Advanced

Yardage Requirements		XS	S	M	L	XL
		(0-2)	(4-6)	(8-10)	(12-14)	(16-18)
View A (Plain)	60"	1½ yds	1½ yds	1⅝ yds	1⅝ yds	1⅝ yds
View B (Gathered)	60"	1½ yds	1½ yds	1⅝ yds	1¾* yds	2¼ yds

* Fabric must be 58" useable, otherwise use next size requirements

Finished Measurements	XS	S	M	L	XL
View A - Bust	32⅝"	34⅝"	36⅝"	39⅝"	43⅝"
View A - Waist	30⅝"	32½"	34⅛"	37⅛"	41⅛"
View A - Hip	36"	38"	40"	43"	47"
View B - Bust ***	44⅝"	46⅝"	48⅝"	51⅝"	55⅝"
View B - Waist	35⅝"	37½"	39⅛"	42⅝"	46⅛"
View B - Hip	37½"	39½"	41½"	44½"	48½"

*** Don't panic over these numbers, remember the body is gathered!



**View A - Plain - Front
Back is Plain (Same)**



**View B - Gathered - Front
Back is Gathered (Same)**

This pattern and all instructions is copyrighted 2010 by Brensan Studios and The Brensan Group, LLC.

All rights reserved. Please contact for permission to reprint any portion hereof.

Brensan Studios™ #532 - 8912 E. Pinnacle Peak Rd F-9 - Scottsdale, AZ 85255

Website: www.brensan.com