

Pagoda Jacket

This classic Kimono inspired jacket has something for everyone. The pieced version is a great slice-n-dice project for the anyone with a great cotton stash, while the single fabric version is super fast and easy and a beautiful way to showcase a fabulous fabric. Whatever your personal style, this is a casual fitting jacket sure to become a favorite.



Yardage Requirements		S	M	L	XL
Pieced Fabric Version		(4-6)	(8-10)	(12-14)	(16-18)
Main Fabric (Black in Cover Model)	45"	4 yds	4 yds	4 yds	4 yds
<i>Includes Neckband, Cuffs & Lower Facings</i>					
Accent Fabric if 1 Fabric	45"	1½ yd	1½ yd	1½ yd	1½ yd
if 2 Fabrics	45"	¾ yd	¾ yd	¾ yd	¾ yd
if 4 Fabrics	45"	½ yd	½ yd	½ yd	½ yd
Inner-Lining (Pieced Version)*	45"	1⅔ yds	2½ yds	2½ yds	2½ yds
Single Fabric Version					
Main Fabric	45"	2½ yds	3 yds	3 yds	3 yds
Main Fabric	52"+	2⅛ yds	2⅛ yds	2⅛ yds	2⅛ yds
Both Versions					
Lining (Both Versions - Optional)	45"	1⅔ yds	2½ yds	2½ yds	2½ yds
Interfacing (Optional) <i>Neckband, Cuffs, Lower Facings</i>	33"	1 yd	1 yd	1 yd	1 yd

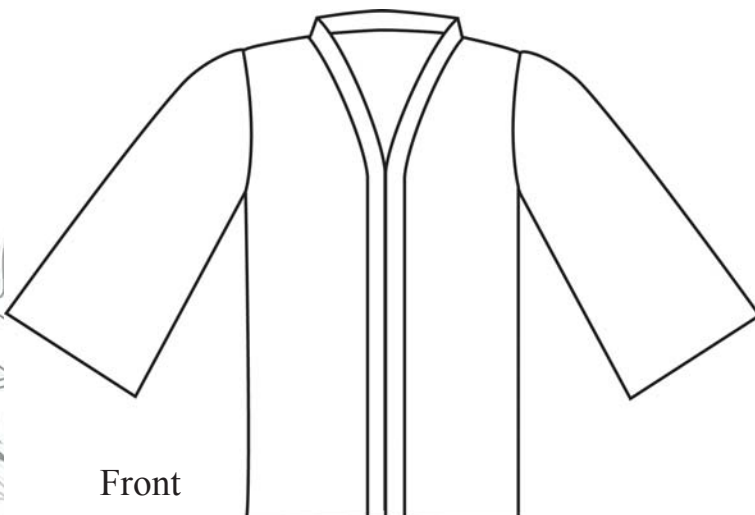
**** Important ****

You will need a rotary cutter, ruler & mat for the pieced version of the Pagoda Jacket.

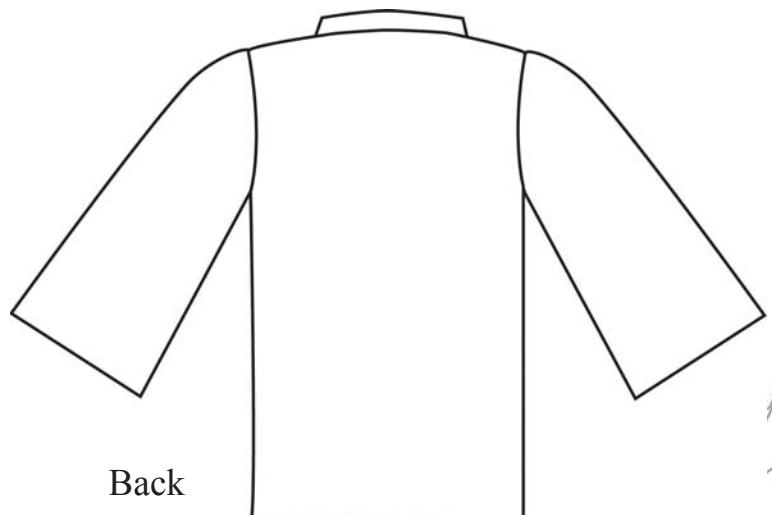
Finished Measurements	S	M	L	XL
Bust	39"	41"	44"	48"
Hip / Lower Edge	39"	41"	44"	48"
Back Length	26¼"	27"	27¾"	28½"

* Cover Model is innerlined with Cotton Flannel

Notions - One 1" Button (optional)



Front



Back

This pattern and all instructions is copyrighted 2011 by Brensan Studios and The Brensan Group, LLC.

All rights reserved. Please contact for permission to reprint any portion hereof.

Brensan Studios™ #532 - 8912 E. Pinnacle Peak Rd F-9 - Scottsdale, AZ - 85255

Website: www.brensan.com