

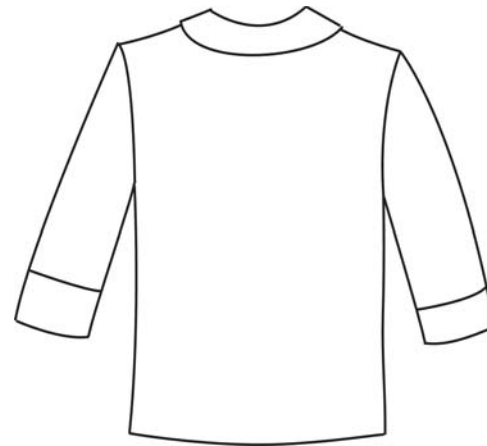
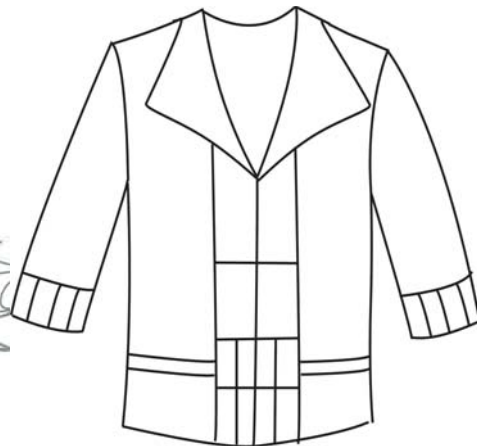
San Miguel Jacket

A beautiful shawl collar that is easy to make combined with decorative piecing for the front band and cuffs make this jacket a great additional to any wardrobe. Make it from many fabrics or from a single beautiful fabric. Jacket is a 'Box Style' with a casual fit - the shoulders are fitted, sides are straight and the sleeves have a nice tailored look, but are a bit fuller for a comfortable fit. Jacket can be lined or unlined.

Yardage Requirements			S	M	L	XL
			(4-6)	(8-10)	(12-14)	(16-18)
View A (Pieced & Lined)						
Lower Front Pieced Panel & Pieced Cuffs - 4 to 5 fabrics total. <i>For fabrics that you choose for the Collar - (Upper and Under), you will need 2/3 yard - for the remaining 2 or 3 fabrics, you will need 1/3 yard each</i>						
Body/Sleeves	45"	2½ yds	2½ yds	2½ yds	2½ yds	2½ yds
	60"	1½ yds	1½ yds	1½ yds	1½ yds	1½ yds
Interfacing		1¼ yds	1¼ yds	1¼ yds	1¼ yds	1¼ yds
Optional Inserts	45"	¾ yd	¾ yd	¾ yd	¾ yd	¾ yd
Lining	45"	2½ yds	2½ yds	2½ yds	2½ yds	2½ yds
View B (All Same Fabric & Lined)						
Body & Facings	45"	2½ yds	2½ yds	3 yds	3 yds	3 yds
	60"	2¼ yds	2¼ yds	2¼ yds	2¼ yds	2¼ yds
Interfacing		1¼ yds	1¼ yds	1¼ yds	1¼ yds	1¼ yds
Lining	45"	2½ yds	2½ yds	2½ yds	2½ yds	2½ yds
Optional Pining/Inserts	45"	¾ yd	¾ yd	¾ yd	¾ yd	¾ yd
Optional Piping Filler (1/8")		4½ yds	4½ yds	4½ yds	4½ yds	4½ yds

Finished Measurements

	S	M	L	XL
Back Length	24½"	25"	25½"	26"
Bust	37½"	39½"	42½"	46½"
Waist	38½"	40½"	43½"	47½"
Hip	40"	42"	45"	49"



This pattern and all instructions is copyrighted 2005-2010 by Brensan Studios and The Brensan Group, LLC.
All rights reserved. Please contact for permission to reprint any portion hereof.

Brensan Studios™ #532 - 8912 E. Pinnacle Peak Rd F-9 - Scottsdale, AZ 85255
Website: www.brensan.com