

# The Sangria Pullover

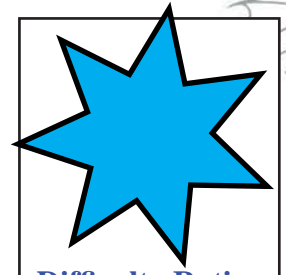
Designed for  
S-t-r-e-t-c-h  
Fabric

Classic and romantic, this versatile pullover will add a new dimension to your wardrobe. The front half of the sleeves are gathered and the longer length sleeves finish just above the elbow. The center front can be gathered or plain, depending on your fabric and personal choice. The back is plain to eliminate bulk should you wish to wear under a jacket. Remember that the sleeves are interchangeable on Stretch Top Patterns!



## What are Stretch Top Patterns?

Stretch Top Patterns are designed so you can mix & match. The sleeve from any dress or top with the Stretch Top Symbol on the pattern will interchange with any other pattern with the Stretch Top Symbol.



### Difficulty Rating

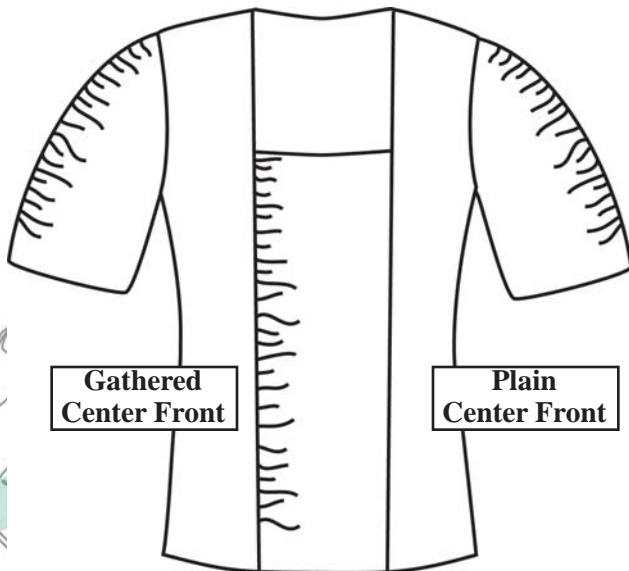
- A-Easy
- B-Intermediate
- C-Advanced

Yardage Requirements		XS	S	M	L	XL
		(0-2)	(4-6)	(8-10)	(12-14)	(16-18)
View A (Gathered)	54"	1 1/3 yds	1 1/3 yds	1 1/2 yds	1 1/2 yds	1 1/2 yds
View B (Plain)	54"	1 2/3 yds	1 2/3 yds	1 2/3 yds	1 7/8 yds	1 7/8 yds

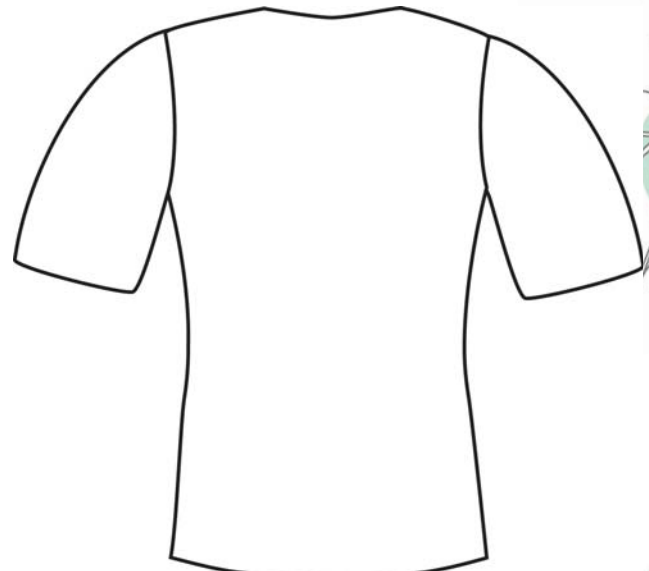
Finished Measurements	XS	S	M	L	XL
Bust	32 5/8"	34 5/8"	36 5/8"	39 5/8"	43 5/8"
Waist	30 1/8"	32 1/8"	34 1/8"	37 1/8"	41 1/8"
Hip	36"	38"	40"	43"	47"

### Special Note for the Striped Cover Garment

Most stripes are not even and you may need to spin the pattern front to achieve a mirror image. Depending on your stripe, you may need extra fabric. Also for the stripe cover model -- in order to turn the Center Front crossgrain, you will need 4-way stretch fabric. If not turning the Center Front cross-grain, 2-way stretch fabric is fine.



Front



Back

This pattern and all instructions is copyrighted 2011 by Brensan Studios and The Brensan Group, LLC.

All rights reserved. Please contact for permission to reprint any portion hereof.

Brensan Studios™ #532 - 8912 E. Pinnacle Peak Rd F-9 - Scottsdale, AZ 85255

Website: [www.brensan.com](http://www.brensan.com)