

The Savannah Blouse

Soft fluted sleeves and a pretty scalloped neckline combine to make the Savannah Blouse a great addition to your Shirt Club Pattern collection. The longer length is flattering and the princess seaming is easy to tailor. You can use the optional ruffles either just around the neck or down the center front as well and add even more fun to your sewing project..



What is a Shirt Club Pattern?
 Shirt Club Patterns are designed so you can mix and match. Any shirt/blouse bodies will easily interchange with any of the sleeves.
 See website for Cross-Reference Chart and details



Yardage Requirements

			S (4-6)	M (8-10)	L (12-14)	XL (16-18)
Plain (No Ruffle)	45"	2¾ yds	3 yds	3 yds	3 yds	3 yds
	60"	2 yds	2 yds	2¼ yds	2¼ yds	2¼ yds
With Ruffles	45"	3¾ yds	3¾ yds	4 yds	4 yds	4 yds
	60"	3 yds	3 yds	3¼ yds	3¼ yds	3¼ yds
Underlining (Optional)	45"	1⅓ yds	1⅓ yds	1⅓ yds	1⅓ yds	1⅓ yds
Interfacing		1/2 yd	1/2 yd	1/2 yd	1/2 yd	1/2 yd

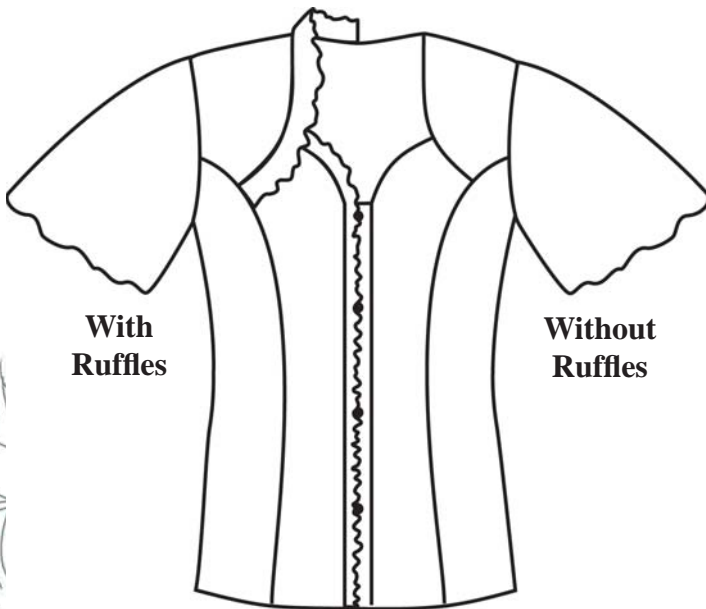
Finished Measurements

	S	M	L	XL
Bust	39"	41"	44"	48"
Hip / Lower Edge	40"	42"	45"	49"
Back Length	25½"	26½"	27½"	28½"

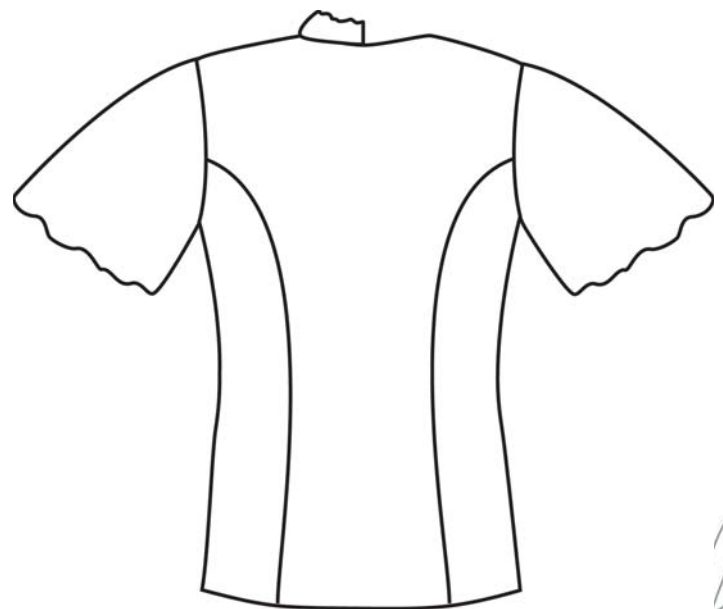
Note:

A Guide is provided for the ruffles, but you can easily make your own with a rotary ruler and a shirring foot or ruffler.

Notions: Four (4) 5/8" Buttons



Front



Back

This pattern and all instructions is copyrighted 2011 by Brensan Studios and The Brensan Group, LLC. All rights reserved. Please contact for permission to reprint any portion hereof.

Brensan Studios™ #532 - 8912 E. Pinnacle Peak Rd F-9 - Scottsdale, AZ 85255
 Website: www.brensan.com