

**Shirt Club
Pattern**

**Great for
Beginners!**

Sew Simple Shirt

As basic as can be - this simple shirt has optional darts for waist shaping, a simple collar and long sleeves. Make it up in fun prints, basic black or white, or use it as a canvas for beautiful machine embroidery.

This fundamental wardrobe piece will be a favorite for years.

What is a Shirt Club Pattern?

Shirt Club Patterns are designed so you can mix and match. Any shirt/blouse bodies will easily interchange with any of the sleeves.

See website for Cross-Reference Chart and details

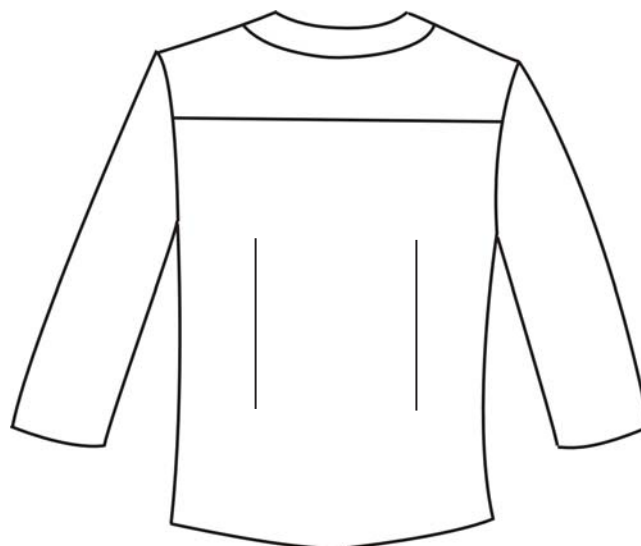
Yardage Requirements		S	M	L	XL
		(4-6)	(8-10)	(12-14)	(16-18)
All Same Fabric	45"	2¼ yds	2½ yds	2½ yds	2½ yds
	60"	1½ yds	2 yds	2 yds	2 yds
Contrast Collar & Facing		1 yd	1 yd	1 yd	1 yd
Interfacing		1 yd	1 yd	1¼ yds	1¼ yds

Finished Measurements		S	M	L	XL
Bust		39"	41"	44"	48"
Hip		40"	42"	45"	49"
Back Length		22½"	23"	23½"	24"

Notions: Five (5) 5/8" Buttons



Front



Back

This pattern and all instructions is copyrighted 2006-2009 by Brensan Studios and The Brensan Group, LLC.

All rights reserved. Please contact for permission to reprint any portion hereof.

Brensan Studios™ #532 - 8912 E. Pinnacle Peak Rd F-9 - Scottsdale, AZ 85255

Website: www.brensan.com