

Wisteria Sleeveless Shell

This is a 'true' sleeveless shell. The underarm area is 1/2" higher and the gap at the front armhole has been removed. Additionally the neckline has been lowered (and the gap adjusted) and the outer shoulder area has been brought in slightly. The really important aspect is that nothing will show that you don't want showing! The shoulder area is wide enough to hide a bra strap and the underarm area will not play peek-a-boo! There is a bust-dart so you can easily adjust the fit and the vertical darts are used for the tailored version (which has a side zipper) but omitted for the pullover version. The neck and armhole facings have been combined for a smooth fit across the upper bodice. A fundamental pattern that will be a good addition to your pattern collection.

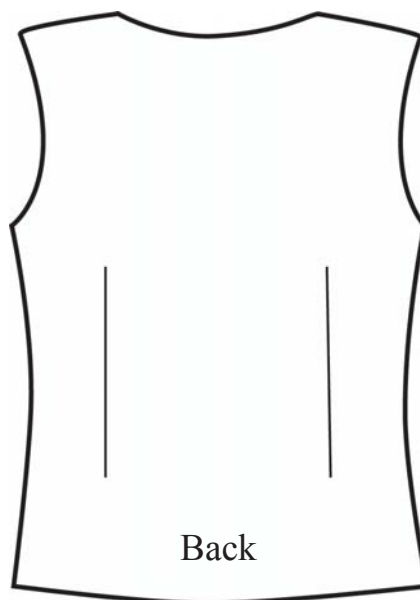
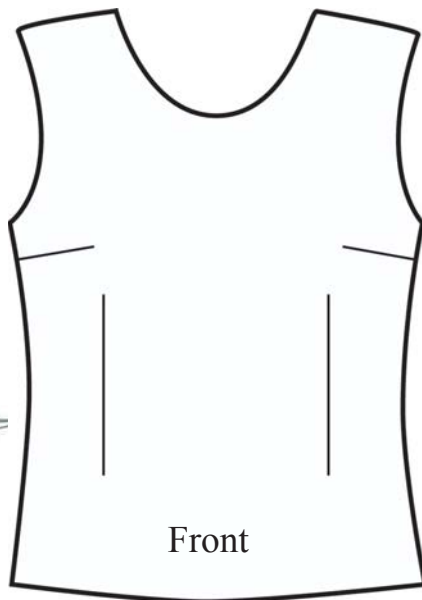


Bonus!
Butterfly Sleeve
included in
Pattern

Yardage Requirements		S	M	L	XL
		(4-6)	(8-10)	(12-14)	(16-18)
Body of Shell (All Views) (Includes facings)	45"	2 yds	2 1/8 yds	2 1/8 yds	2 1/8 yds
	(must be at least 56") 60"	1 1/8 yds	1 1/8 yds	1 1/8 yds	1 1/8 yds
Butterfly Sleeve (if <43" double yardage S/M)	45"	1/2 yd	1/2 yd	1 yd	1 yd
	60"	1/2 yd	1/2 yd	1/2 yd	1/2 yd
Ruffles	45"	Enough in Body Yardage			
	60"	1/3 yd	1/3 yd	1/3 yd	1/3 yd

Finished Measurements	S	M	L	XL
Bust	37 3/4"	39 3/4"	43 3/4"	46 3/4"
Hip / Lower Edge	41"	43"	46"	50"
Back Length	21 3/4"	22 1/4"	22 3/4"	23 1/4"

Notions: Optional 18" Zipper for Side Seam opening if making tailored version. Zipper will be slightly longer than seam.



This pattern and all instructions is copyrighted 2010 by Brensan Studios and The Brensan Group, LLC.

All rights reserved. Please contact for permission to reprint any portion hereof.

Brensan Studios™ #532 - 8912 E. Pinnacle Peak Rd F-9 - Scottsdale, AZ, 85255

Website: www.brensan.com