

Yin Yang Jacket

Opposites definitely attract in this fun Yin Yang Jacket. The left front piecing is accented by a front yoke and the right front balances the left with calmer piecing and a side pocket. The center back reinforces the piecing theme and the simple collar stand frames your face without adding the bulk of a collar. The 3/4 sleeves add a contemporary touch and leave room for a little bling! A shoulder princess design, this is a casual fitting jacket with no internal stabilizing and no shoulder pads.



“Yin and Yang are complementary opposites that interact within a greater whole, as part of a dynamic system”

Yardage Requirements		S	M	L	XL
		(4-6)	(8-10)	(12-14)	(16-18)
Main Fabric (Blue in Cover Model)	45”	2½ yds	2⅝ yds	2⅝ yds	2⅝ yds
Piecing Fabrics (if non-directional)*	45”	½ yard each of 5 different fabrics			
Accent for Bias Strips	45”	1 yd	1 yd	1 yd	1 yd
Lining	45”	2⅛ yds	2⅛ yds	2⅛ yds	2⅛ yds
Inner-Lining	45”	3¼ yds	3½ yds	3¾ yds	4 yds
Interfacing	33”	1 yd	1 yd	1 yd	1 yd

Finished Measurements	S	M	L	XL
Bust	39”	41”	44”	48”
Hip / Lower Edge	40”	42”	45”	49”
Back Length	24¾”	25¼”	25¾”	26¼”

Thoughts on Innerlining

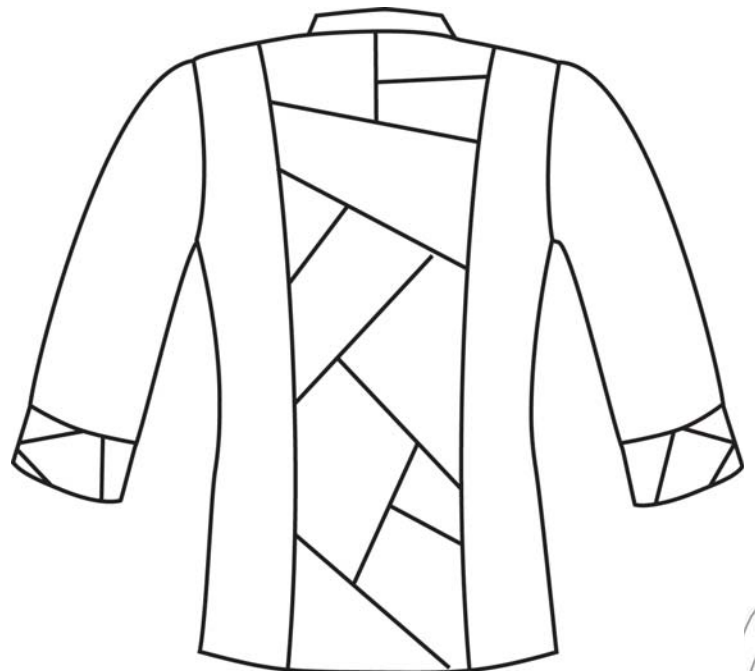
Muslin is a traditional innerlining and will give you a light to medium weight finished jacket, while flannel will give you a softer finished effect. Quilt weight cotton will give a crisp finish and will give your jacket a little more “uumph”. Remember to preshrink well!

Notions - 5 (Five) ¾” Buttons

* If fabric is directional, then ¾” yard x 5 fabrics



Front



Back

This pattern and all instructions is copyrighted 2011 by Brensan Studios and The Brensan Group, LLC.

All rights reserved. Please contact for permission to reprint any portion hereof.

Brensan Studios™ #532 - 8912 E. Pinnacle Peak Rd F-9 - Scottsdale, AZ 85255

Website: www.brensan.com