

Basic Long Sleeve Shirt

Another great basic, make this shirt with the stand and collar - with just the stand - or without either! A long sleeve with standard one-button cuff is also a timeless classic you will use for many years.

Don't let the fact that this shirt uses a Collar Stand scare you!

The traditional method of attaching a collar stand can be quite a challenge - even to an experienced sewer. May the sewing gurus forgive me, but I prefer to use a facing - it's much easier to get a beautiful finished neckline. I hope you have success with my method!

What is a Shirt Club Pattern?

Shirt Club Patterns are designed so you can mix and match. Any shirt/blouse bodies will easily interchange with any of the sleeves. See website for Cross-Reference Chart and details

Yardage Requirements

		S	M	L	XL
		(4-6)	(8-10)	(12-14)	(16-18)
Fabric - View A	45"	2 yds	2¾ yds	3 yds	3 yds*
	60"	1½ yds	1⅝ yds	1¾ yds	1⅞ yds
Fabric - View B	45"	3¼ yds	3½ yds	3½ yds	3½ yds*
	60"	1⅔ yds	1⅞ yds	2 yds	2⅞ yds
Interfacing - View A		1 yd	1 yd	1¼ yd	1¼ yd
Interfacing - View B		1¼ yds	1¼ yds	1½ yds	1½ yds

Finished Measurements	S	M	L	XL
Bust	39"	41"	44"	48"
Hip	40"	42"	45"	49"
Back Length - View A	22½"	23"	23½"	24"
Back Length - View B	30"	31"	32"	33"

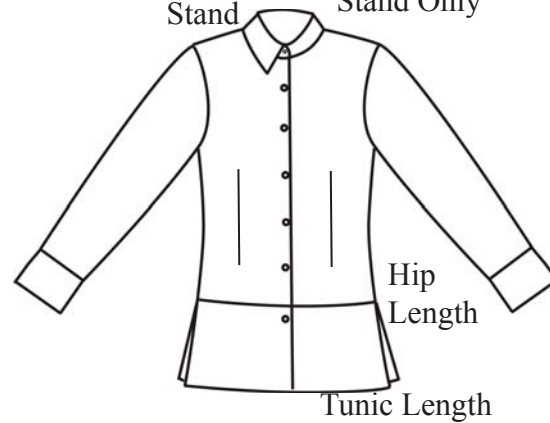
* Yardages for XL require 43" usable - if not 43" purchase ¾ yd extra

Notions:

Short Version - (9) Nine 1/2" buttons

Long Version - (11) Eleven 1/2" buttons

Collar and Stand Stand Only



Collar and Stand Stand Only

