

Designed for
S-t-r-e-t-c-h
Fabric

Chardonnay Dress

A classic, yet easy dress -- don't let that point fool you. You never have to sew a point because the design allows you to assemble the front pieces in gentle curves. Pull-on ease and comfort and an easy binding on the tulip sleeves let you enjoy a classic design in easy-to-wear stretch fabrics.



What are Stretch Top Patterns?

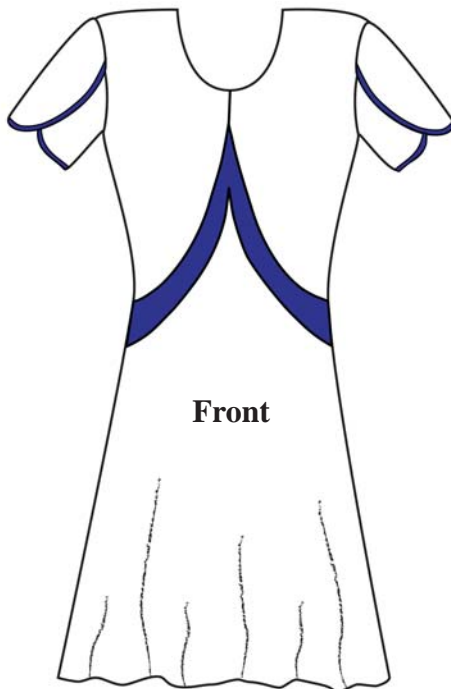
Stretch Top Patterns are designed so you can mix & match. The sleeve from any dress or top with the Stretch Top Symbol on the pattern will interchange with any other pattern with the Stretch Top Symbol.

Yardage Requirements

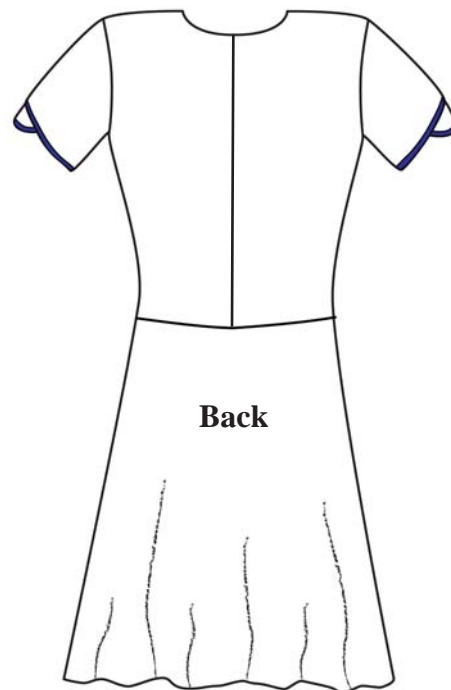
| | | XS | S | M | L | XL |
|------------------------|-----|---------|---------|---------|---------|---------|
| | | (0-2) | (4-6) | (8-10) | (12-14) | (16-18) |
| Main Fabric | 60" | 2 yds | 2 yds | 2 yds | 2 yds | 2 yds |
| Accent and Sleeve Edge | 60" | 5/8 yds | 5/8 yds | 2/3 yds | 2/3 yds | 2/3 yds |

Finished Measurements

| | XS | S | M | L | XL |
|---------------|---------|---------|---------|---------|---------|
| Bust | 32 1/4" | 34 1/4" | 36 1/4" | 39 1/4" | 43 1/4" |
| Waist | 29" | 31" | 33" | 36" | 40" |
| Hip | 37 1/2" | 39 1/2" | 41 1/2" | 44 1/2" | 48 1/2" |
| Back Length - | 39" | 40" | 41" | 42" | 43" |



Front



Back

This pattern and all instructions is copyrighted 2009 by Brensan Studios and The Brensan Group, LLC

All rights reserved. Please contact for permission to reprint any portion hereof.

Brensan Studios™ #532 - 8912 E. Pinnacle Peak Rd F-9 - Scottsdale, AZ 85255

Website: www.brensan.com