

# Flirty Curves Jacket

Easy to make Dolman Sleeves - Great fit - Lined or Reversible, you decide - Optional Decorative Banding - 4 Sleeve options - all in one great jacket! Make this curvy-edge jacket in cottons, rayons, wools, or blends - looks great in theme prints, florals, brights, batiks, country - whatever your style - this jacket will make a fun and comfortable addition to your wardrobe. Make the short sleeve for summer fun and the long sleeve for cooler weather.

**Reversible!**

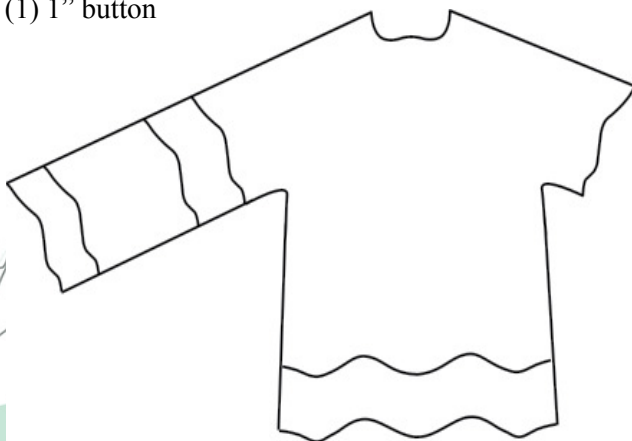


Yardage Requirements		S	M	L	XL
		(6-8)	(10-12)	(14-16)	(18-20)
Main Fabric (Body) - Long or Short Sleeve	45"	2½ yds	2½ yds	3 yds	3½ yds
	60"	2 yds	2 yds	2⅓ yds	2⅓ yds
Ling (Reverse Side) - Long or Short Sleeve	45"	2½ yds	2½ yds	3 yds	3½ yds
	60"	2 yds	2 yds	2⅓ yds	2⅓ yds
Underlining - Long or Short Sleeve	45"	2½ yds	2½ yds	3 yds	3½ yds
	60"	2 yds	2 yds	2⅓ yds	2⅓ yds
Piping/Binding Fabric	45"	1 yd	1 yd	1 yd	1 yd
Pocket Lining	45"	¼ yd	¼ yd	¼ yd	¼ yd
Piping Filler (1/8")		7½ yds	7½ yds	8 yds	8 yds

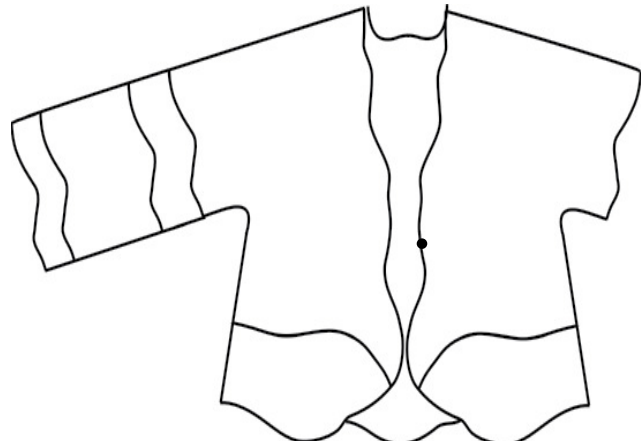
Please allow extra if working with directional fabric. Piping is optional, but does lend a nice finished touch to the design. Binding can be substituted for piping with same yardage requirements.

## Notions (Optional)

(1) 1" button



**Back**  
Long or Short Sleeve



**Front**  
Long or Short Sleeve

This pattern and all instructions is copyrighted by Brensan Studios and The Brensan Group, LLC.

All rights reserved. Please contact for permission to reprint any portion hereof.

Brensan Studios™ #532 - 8912 E. Pinnacle Peak Rd F-9 - Scottsdale, AZ 85255

Website: [www.brensan.com](http://www.brensan.com)