

Pleat Front Pants

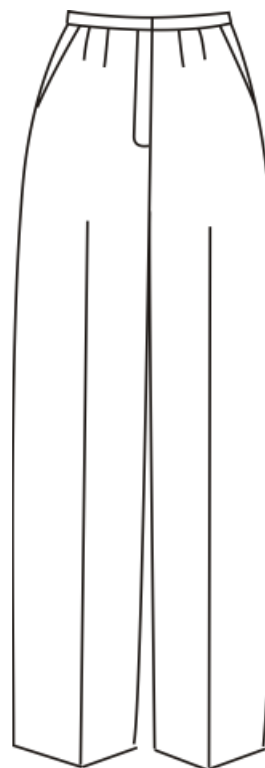
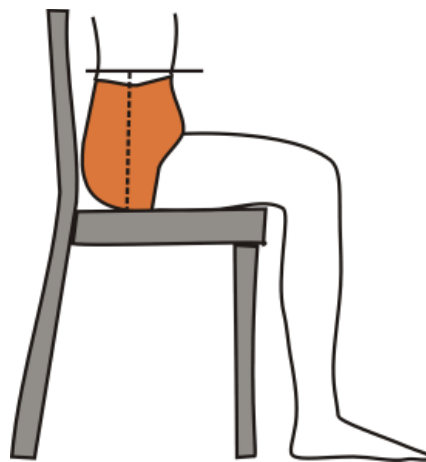
A wardrobe basic, these Pleat Front Pants have Slant Pockets and are trim-fitting while allowing a little extra space where we need it most - the look is long and lean, but I think you'll be pleased with the fit. The Pocket Base extends to Center Front and serves as a Tummy Control Panel.

Yardage Requirements

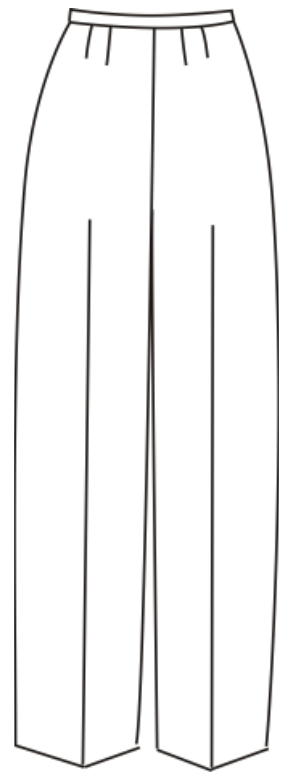
		XS	S	M	L	XL
		(0-2)	(4-6)	(8-10)	(12-14)	(16-18)
Pants	45"	3½ yds	3½ yds	3½ yds	3½ yds	3½ yds
	60"	2 yds	2 yds	2¾ yds	2¾ yds	2¾ yds

Finished Measurements	XS	S	M	L	XL
Waist	25½"	27½"	29½"	32½"	36½"
Hip - 7" from Waist	37½"	39½"	41½"	44½"	48½"
Hip - 9" from Waist	39"	41"	43"	46"	50"
Finished Length (from Waist)	41½"	42½"	43½"	44½"	45½"

Fitting
Instructions
Included



Pants Front



Pants Back

This pattern and all instructions is copyrighted 2008 by Brensan Studios and The Brensan Group, LLC. All rights reserved. Please contact for permission to reprint any portion hereof.

Brensan Studios™ #532 - 8912 E. Pinnacle Peak Rd F-9 - Scottsdale, AZ 85255
Website: www.brensan.com