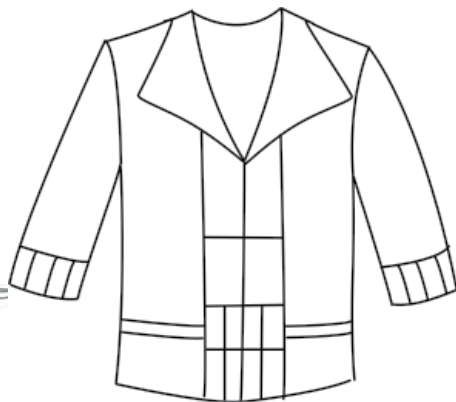


San Miguel Jacket

A beautiful shawl collar that is easy to make combined with decorative piecing for the front band and cuffs make this jacket a great addition to any wardrobe. Make it from many fabrics or from a single beautiful fabric. Jacket is a 'Box Style' with a casual fit - the shoulders are fitted, sides are straight and the sleeves have a nice tailored look, but are a bit fuller for a comfortable fit. Jacket can be lined or unlined.

Yardage Requirements

			S	M	L	XL
			(4-6)	(8-10)	(12-14)	(16-18)
View A (Pieced & Lined)						
Lower Front Pieced Panel & Pieced Cuffs						
You will need 4 to 5 fabrics total. For fabrics that you choose for the Collar (Upper and Under), you will need 2/3 yard - for the remaining 2 or 3 fabrics, you will need 1/3 yard each						
Body/Sleeves	45"	2½ yds	2½ yds	2½ yds	2½ yds	2½ yds
	60"	1½ yds	1½ yds	1½ yds	1½ yds	1½ yds
Interfacing		1¼ yds	1¼ yds	1¼ yds	1¼ yds	1¼ yds
Optional Inserts	45"	¾yd	¾yd	¾yd	¾yd	¾yd
Lining	45"	2½ yds	2½ yds	2½ yds	2½ yds	2½ yds
View B (All Same Fabric & Lined)						
Body & Facings	45"	2½ yds	2½ yds	3 yds	3 yds	3 yds
	60"	2¼ yds	2¼ yds	2¼ yds	2¼ yds	2¼ yds
Interfacing		1¼ yds	1¼ yds	1¼ yds	1¼ yds	1¼ yds
Lining	45"	2½ yds	2½ yds	2½ yds	2½ yds	2½ yds
Optional Pining/Inserts	45"	¾yd	¾yd	¾yd	¾yd	¾yd
Optional Piping Filler (1/8")		4½ yds	4½ yds	4½ yds	4½ yds	4½ yds



This pattern and all instructions is copyrighted 2005, 2006, 2007 by Brensan Studios and The Brensan Group, LLC.

All rights reserved. Please contact for permission to reprint any portion hereof.

Brensan Studios™ #532 - 8912 E. Pinnacle Peak Rd F-9 - Scottsdale, AZ 85255

Website: www.brensan.com