

Designed for
S--t--r--e--t--c--h
Fabric

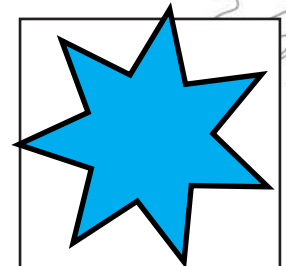
Tequila Pull-Over

Make your very own Tequila Sunrise with this comfortable wrap-style top. The Tequila can be made in 1 fabric, 2 fabrics or even more - you decide. Easy 3/4 sleeves complete the look for this timeless addition to your wardrobe. The Tequila is designed with everything stitched into the side seam - thus making it easy to 'snug' up the fit after you have completed the top and before completing the final hem.



What are Stretch Top Patterns?

Stretch Top Patterns are designed so you can mix & match. The sleeve from any dress or top with the Stretch Top Symbol on the pattern will interchange with any other pattern with the Stretch Top Symbol.



Difficulty Rating
A-Easy
B- Intermediate
C-Advanced

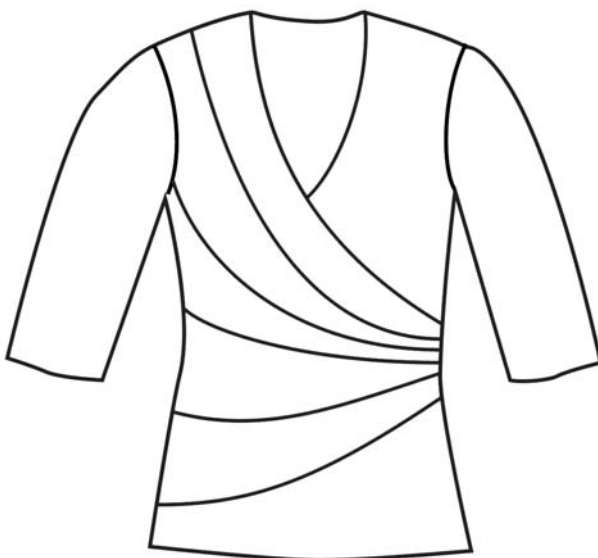
Yardage Requirements

		XS (0-2)	S (4-6)	M (8-10)	L (12-14)	XL (16-18)
Main Fabric - View A	54/60"	1½ yds	1½ yds	1½ yds	1½ yds	1½ yds
Accent - View A	54/60"	1 yd	1 yd	1 yd	1 yd	1 yd
View B	54/60"	2½ yds	2½ yds	2½ yds	2½ yds	2½ yds

These measurements may seem odd, but much of the top is cut single layer and full body width.

Finished Measurements

	XS	S	M	L	XL
Bust	32¼"	34¼"	36¼"	39¼"	43¼"
Waist	38¾"	30¾"	32¾"	35¾"	39¾"
Hip (at Hemline)	36"	38"	40"	43"	47"



Front



Back

This pattern and all instructions is copyrighted 2009 by Brensan Studios and The Brensan Group, LLC.

All rights reserved. Please contact for permission to reprint any portion hereof.

Brensan Studios™ #532 - 8912 E. Pinnacle Peak Rd F-9 - Scottsdale, AZ 85255

Website: www.brensan.com